

Section 10: Other Applications

Tangent Line Approximation

Back when we first thought about the derivative, we used the slope of secant lines over tiny intervals to approximate the derivative:

$$f'(a) \cong \frac{\Delta y}{\Delta x} = \frac{f(x) - f(a)}{x - a}$$

Now that we have other ways to find derivatives, we can exploit this approximation to go the other way. Solve the expression above for $f(x)$, and you'll get the tangent line approximation:

The Tangent Line Approximation (TLA)

To approximate the value of $f(x)$ using TLA, find some a where

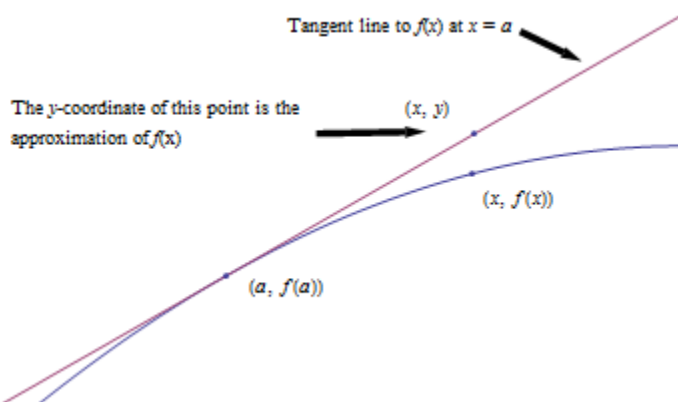
1. a and x are “close,” and
2. You know the exact values of both $f(a)$ and $f'(a)$.

$$\text{Then } f(x) \cong f(a) + f'(a)(x - a)$$

Another way to look at the same formula:

$$\Delta y \cong f'(a)\Delta x$$

How close is close? It depends on the shape of the graph of f . In general, the closer the better.



Example 1

Suppose we know that $g(20) = 5$ and $g'(20) = 1.4$. Use this information to approximate $g(23)$ and $g(18)$.

Using the tangent line approximation:

$$g(23) \approx 5 + (1.4)(23 - 20) = 9.2$$

$$g(18) \approx 5 + (1.4)(18 - 20) = 2.2$$

Note that we don't know if these approximations are close – but they're the best we can do with the limited information we have to start with. Note also that 18 and 23 are sort of close to 20, so we can hope these approximations are pretty good. We'd feel more confident using this information to approximate $g(20.003)$. We'd feel very unsure using this information to approximate $g(55)$.

Elasticity

We know that demand functions are decreasing, so when the price increases, the quantity demanded goes down. But what about revenue = price \times quantity? When the price increases will revenue go down because the demand dropped so much? Or will revenue increase because demand didn't drop very much?

Elasticity of demand is a measure of how demand reacts to price changes. It's normalized – that means the particular prices and quantities don't matter, and everything is treated as a percent change. The formula for elasticity of demand involves a derivative, which is why we're discussing it here.

Elasticity of Demand

Given a demand function that gives q in terms of p ,

The elasticity of demand is $E = \left| \frac{p}{q} \cdot \frac{dq}{dp} \right|$

(Note that since demand is a decreasing function of p , the derivative is negative. That's why we have the absolute values – so E will always be positive.)

If $E < 1$, we say demand is **inelastic**. In this case, raising prices increases revenue.

If $E > 1$, we say demand is **elastic**. In this case, raising prices decreases revenue.

If $E = 1$, we say demand is **unitary**. $E = 1$ at critical points of the revenue function.

Interpretation of elasticity:

If the price increases by 1%, the demand will decrease by $E\%$.

Example 2

A company sells q ribbon winders per year at $\$p$ per ribbon winder. The demand function for ribbon winders is given by $p = 300 - 0.02q$. Find the elasticity of demand when the price is $\$70$ apiece. Will an increase in price lead to an increase in revenue?

First, we need to solve the demand equation so it gives q in terms of p , so that we can find $\frac{dq}{dp}$:

$$p = 300 - 0.02q, \text{ so } q = 15000 - 50p. \text{ Then } \frac{dq}{dp} = -50.$$

We need to find q when $p = 70$: $q = 11500$.

$$\text{Now compute } E = \left| \frac{p}{q} \cdot \frac{dq}{dp} \right| = \left| \frac{70}{11500} \cdot (-50) \right| \approx 0.3.$$

$E < 1$, so demand is inelastic. Increasing the price by 1% would only cause a 0.3% drop in demand. Increasing the price would lead to an increase in revenue, so it seems that the company should increase its price.

The demand for products that people have to buy, such as onions, tends to be inelastic. Even if the price goes up, people still have to buy about the same amount of onions, and revenue will not go down. The demand for products that people can do without, or put off buying, such as cars, tends to be elastic. If the price goes up, people will just not buy cars right now, and revenue will drop.

Example 3

A company finds the demand q , in thousands, for their kites to be $q = 400 - p^2$ at a price of p dollars. Find the elasticity of demand when the price is \$5 and when the price is \$15. Then find the price that will maximize revenue.

Calculating the derivative, $\frac{dq}{dp} = 2p$. The elasticity equation as a function of p will be:

$$E = \left| \frac{p}{q} \cdot \frac{dq}{dp} \right| = \left| \frac{p}{400 - p^2} \cdot 2p \right| = \left| \frac{2p^2}{400 - p^2} \right|$$

Evaluating this to find the elasticity at \$5 and at \$15:

$$E(5) = \left| \frac{2(5)^2}{400 - (5)^2} \right| \approx 0.133. \text{ The demand is inelastic when the price is } \$5.$$

At a price of \$5, a 1% increase in price would decrease demand by only 0.133%. Revenue could be raised by increasing prices.

$$E(15) = \left| \frac{2(15)^2}{400 - (15)^2} \right| \approx 2.571. \text{ The demand is elastic when the price is } \$15.$$

At a price of \$15, a 1% increase in price would decrease demand by 2.571%. Revenue could be raised by decreasing prices.

To maximize the revenue, we could solve for when $E = 1$.

$$\left| \frac{2p^2}{400 - p^2} \right| = 1$$

$$2p^2 = 400 - p^2$$

$$3p^2 = 400$$

$$p = \sqrt{\frac{400}{3}} \approx 11.55.$$

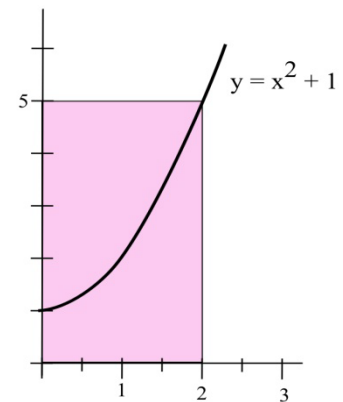
A price of \$11.55 will maximize the revenue.

2.10 Exercises

1. If $g(20) = 35$ and $g'(20) = -2$, estimate the value of $g(22)$.
2. If $g(1) = -17$ and $g'(1) = 5$, estimate the value of $g(1.2)$.
3. Use the Tangent Line Approximation to estimate the cube root of 9.
4. Use the Tangent Line Approximation to estimate the fifth root of 30.

5. A rectangle has one side on the x -axis, one side on the y -axis, and a corner on the graph of $y = x^2 + 1$.

- (a) Use Linear Approximation of the area formula to estimate the increase in the area of the rectangle if the base grows from 2 to 2.3 inches.
- (b) Calculate exactly the increase in the area of the rectangle as the base grows from 2 to 2.3 inches.



6. You can measure the diameter of a circle to within 0.3 cm.
 - (a) How large is the "error" in the calculated area of a circle with a measured diameter of 7.4 cm?
 - (b) How large is the "error" in the calculated area of a circle with a measured diameter of 13.6 cm?
 - (c) How large is the percentage error in the calculated area of a circle with a measured diameter of d ?
7. The demand function for Alicia's oven mitts is given by $q = -8p + 80$ (q is the number of oven mitts, p is the price in dollars). Find the elasticity of demand when $p = \$7.50$. Will revenue increase if Alicia raises her price from $\$7.50$?
8. The demand function for Shaki's danglies is given by $q = -35p + 205$ (q is the number of danglies, p is the price in dollars per dangly). Find the elasticity of demand when $p = \$5$. Should Shaki raise or lower his price to increase revenue?